

PLANNING AUTHORITY

Perit Godwin Agius
Adm Building
Marsa Power Station
Church Wharf Street
Marsa MRS 1571

Date : 6 March 2017
Your Ref : TD/95/14

Dear Sir/Madam,

Notification Number: DN 00166/17
Proposal: Demolishing of chimney and two (2) boilers at Delimara power-station.
Location: Delimara Power Station , Delimara, Marsaxlokk, Malta

Permitted Development by the Development Notification Order, 2016.

We refer to your notification of intent to undertake the above mentioned works, validated on 6 March 2017.

In accordance with the Development Notification Order, 2016, the development as endorsed on the attached drawings and site plan DN 166/17/1A/1B/1C/1D/1E. Conditions imposed in DN 1054/14 apply.

is permitted under the following class:

1(i) Internal alterations

This written notification is limited to the development as shown on the submitted plans and is issued without prejudice to sub-article 55(7) of the Development Planning Act, 2016.

This written notification is valid for a period of 12 Months from 6 March 2017 to 6 March 2018, but is rendered null in the event that the development is subsequently modified, extended or relocated in a manner which would result in the limitations set out in the Development Notification Order being exceeded.

The written notification is granted saving third party rights. This notification does not exonerate the applicant from obtaining any other necessary permission, license, clearance or approval required from any Government department, local council, agency or authority, as required by any law or regulation, including an environmental permit from the Planning Authority for the operation of the permitted development.

A Commencement Notice is to be submitted to the Planning Authority, by the *perit* on behalf of the applicant, at least FIVE DAYS prior to the date of commencement of works or utilisation of the permission. Failure to submit the Commencement Notice (with all fields correctly completed) or failure to submit it within the required timeframe shall invalidate the Notice and shall result in the imposition of fines according to Schedule D of Legal Notice 277 of 2012, or its amendments, or its replacements. In addition, **if the applicant fails to submit the Commencement Notice or the**

Commencement Notice submitted is invalid, the relative permission shall be considered as ever having been utilised - Article 72(4) of the Development Planning Act (2016).

Where applicable, the development, hereby notified, shall be carried out in accordance with the provisions of the Environmental Management Construction Site Regulations, LN 295 of 2007.

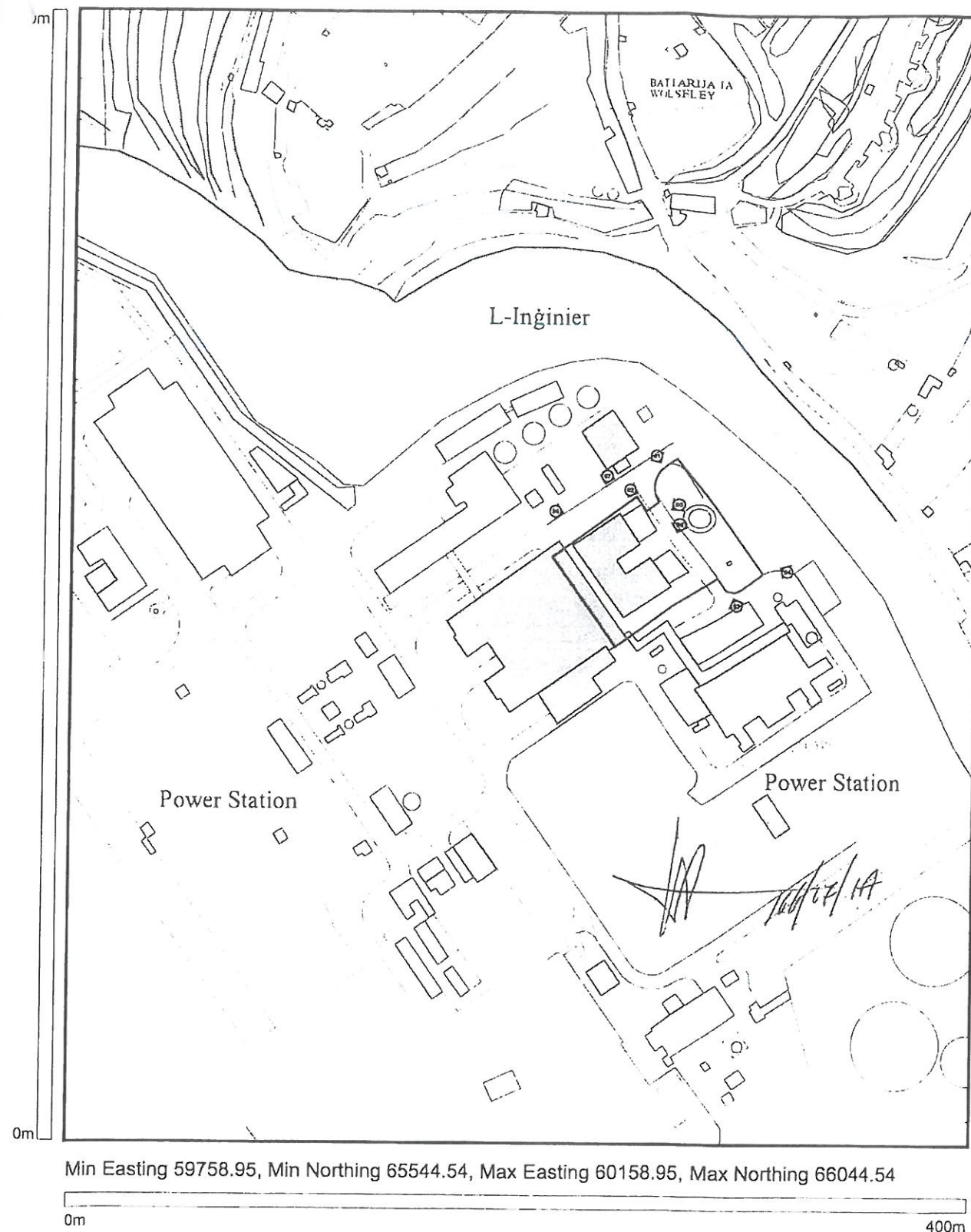
If the declaration of ownership, as contained in the application form, is determined as incorrect by an Administrative Tribunal or by a Court of Law, then the said notification and its effects shall be considered as null and void.

~~Malcolm Perring~~ B. Plan.

f/ Executive Chairperson

c.c. Ing. Fredrick Azzopardi

1A



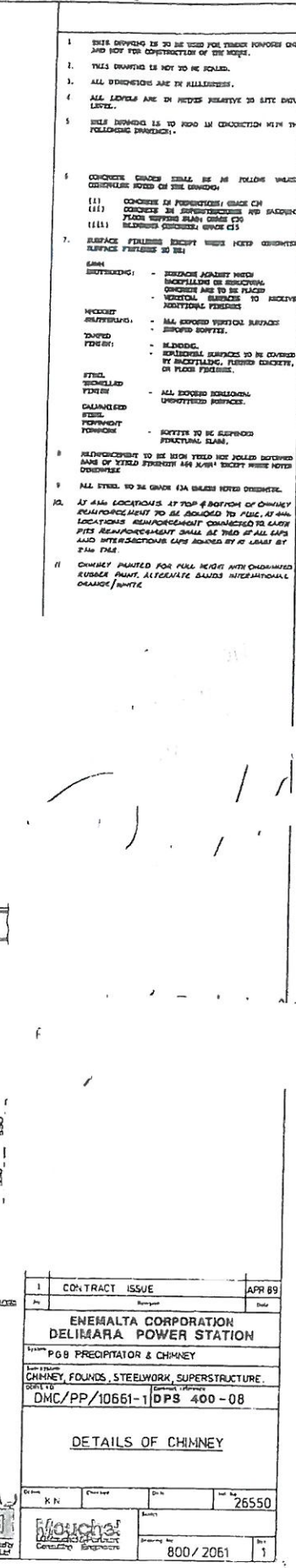
Planning Authority - www.pa.org.mt

St. Francis Ravelin
Floriana FRN 1230, Malta
PO Box 200, Marsa MRS 1000, Malta
Tel: +356 2290 0000 Fax: +356 22902295

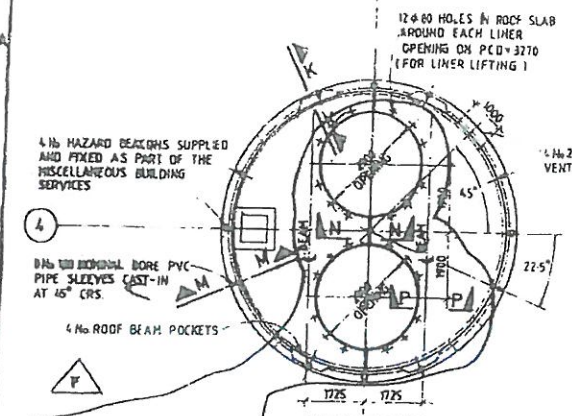
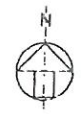
Site Plan, Scale 1:2500
Printed on: Wednesday, December 14, 2016

Not to be used for interpretation or scaling of scheme alignments
Copyright © PA - Planning Authority. Not for resale.





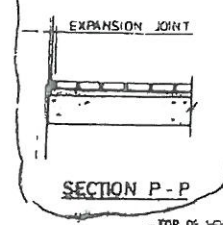
SETEL	X
*11 500	1330
*08 000	1070
*37 000	080
*40 000	530
*65 700	340
*78 300	340
*83 700	340
*102 500	340
*110 500	340
*120 000	340
*126 500	340



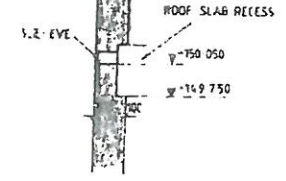
PLAN E-E (Roof)

EXPANSION JOINT
20mm BITUMEN IMPREGNATED FIBREBOARD
20x25 POLYSULPHIDE SEALANT

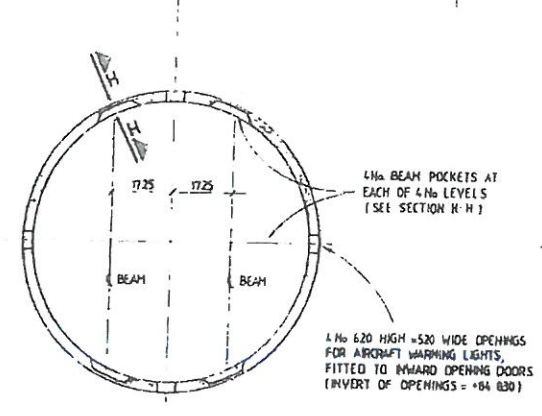
SECTION N-N



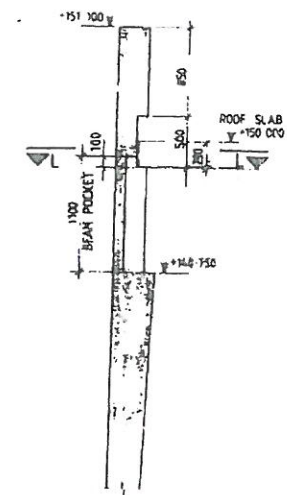
SECTION P-P



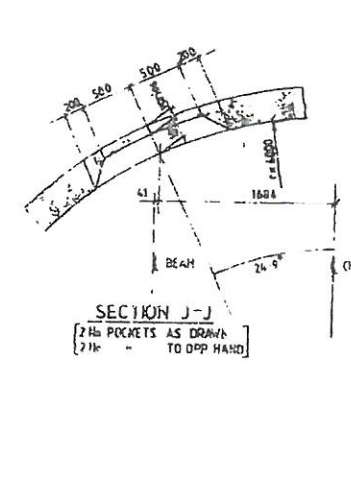
SECTION M-M



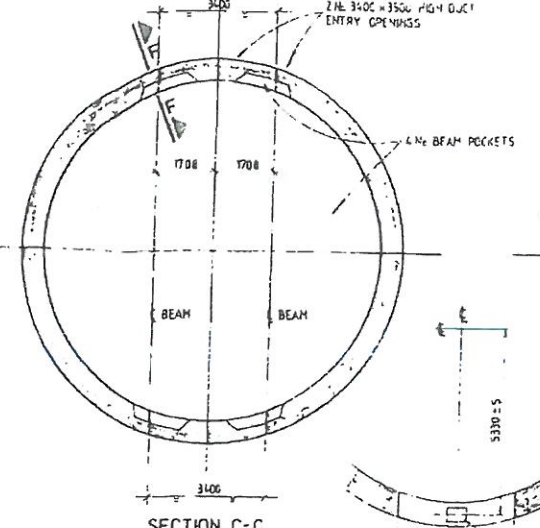
SECTION D-D



SECTION K-K

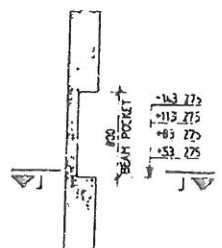


SECTION J-J
[2 No. POCKETS AS DRAWN TO OPP HAND]

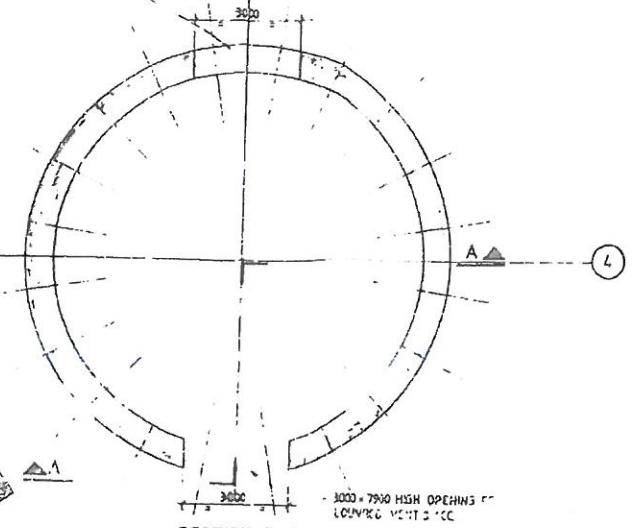


SECTION C-C

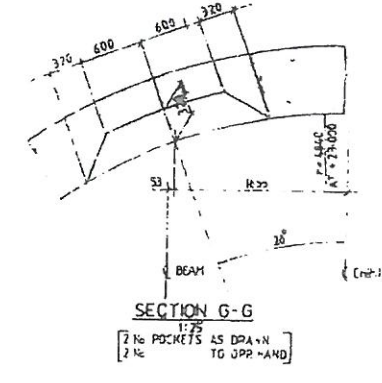
DUCT ENTRY OPENING
(OPPOSITE SIDE SIMILAR)



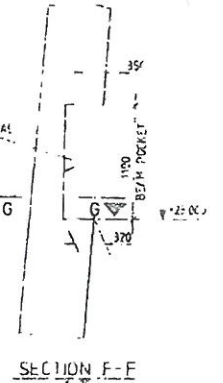
SECTION H-H



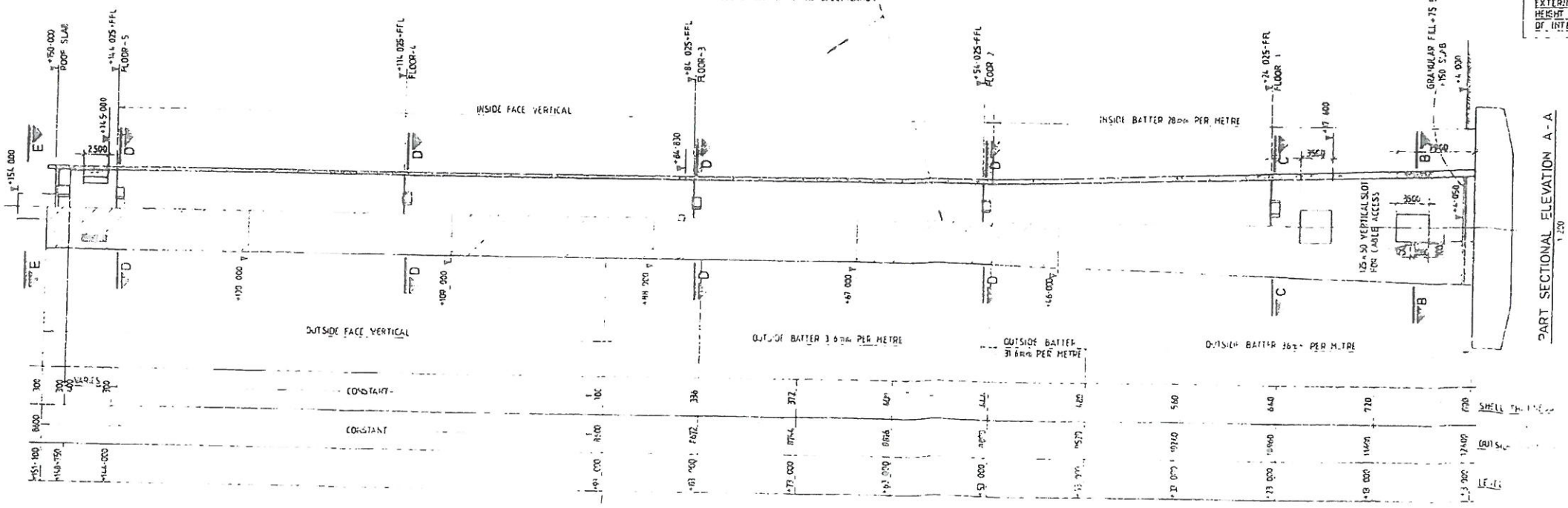
SECTION B-B



SECTION G-G
[2 No. POCKETS AS DRAWN TO OPP HAND]



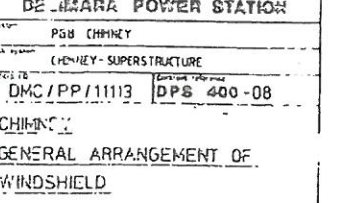
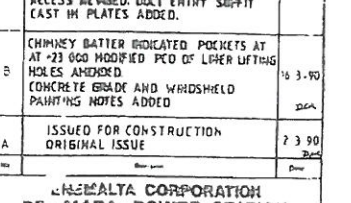
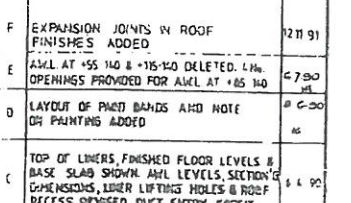
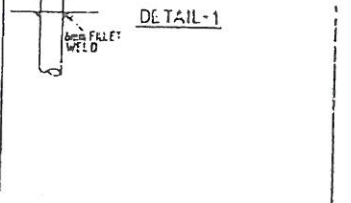
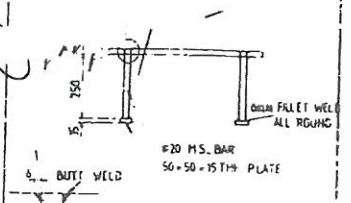
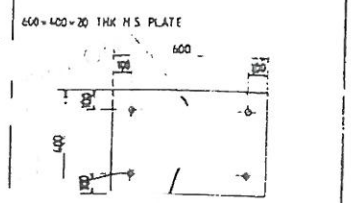
SECTION F-F



EXTERNAL FACE OF CHIMNEY PAINTED TO FULL HEIGHT WITH CHLORINATED RUBBER PAINT (BANDS OF INTERNATIONAL ORANGE AND WHITE)

PART SECTIONAL ELEVATION A-A

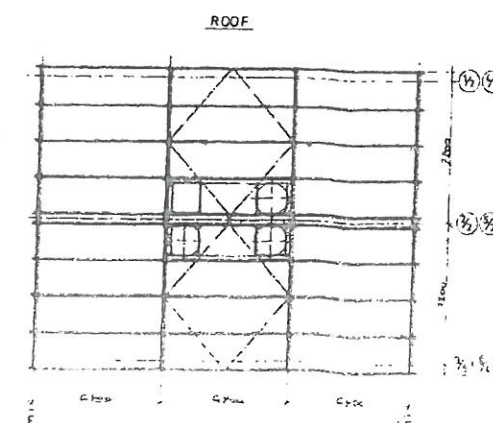
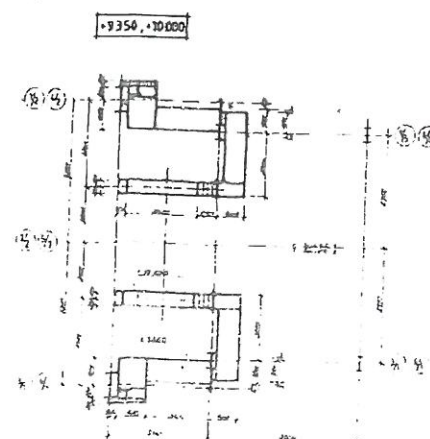
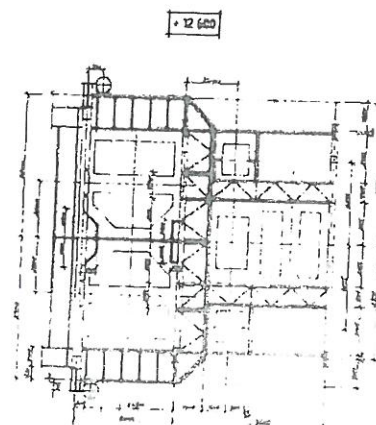
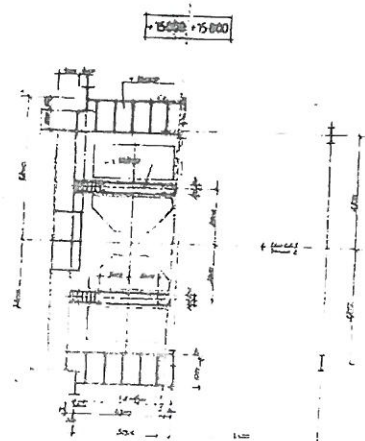
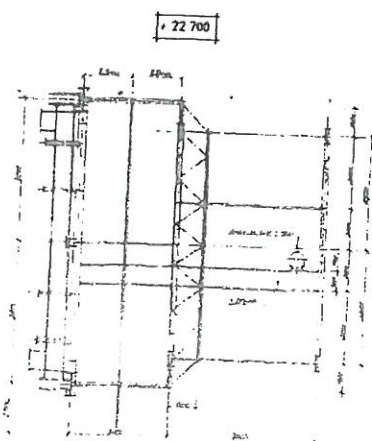
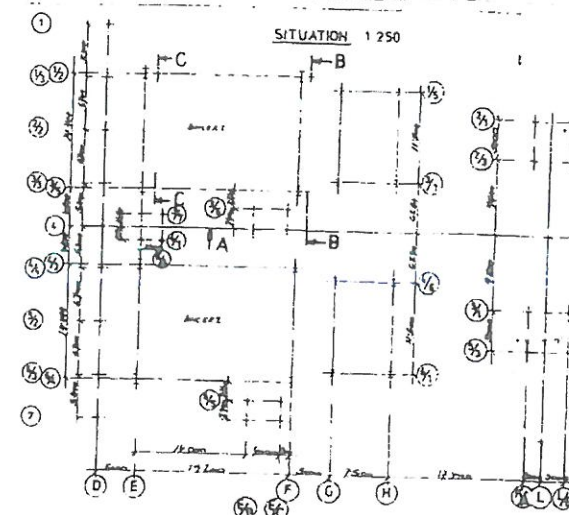
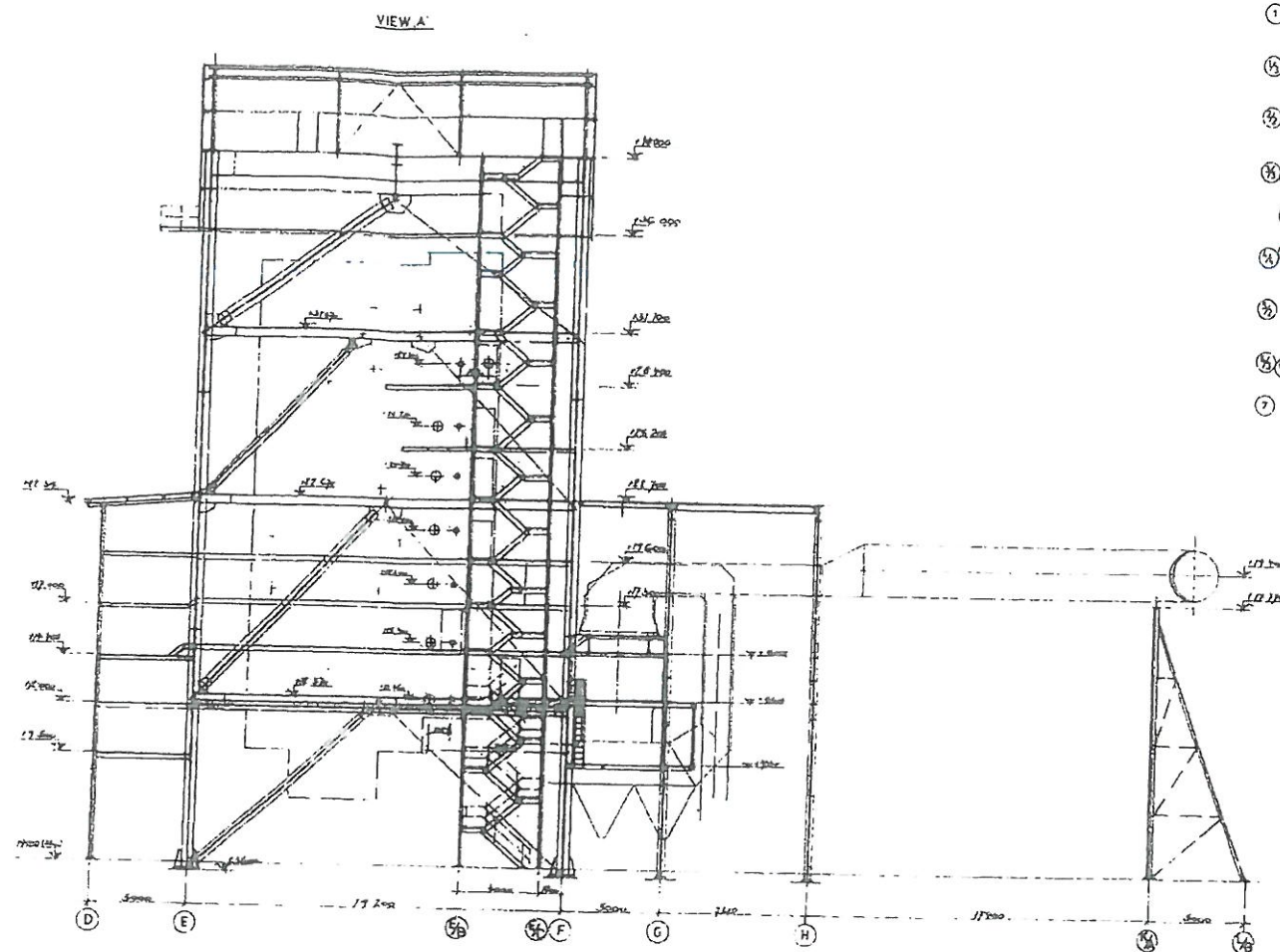
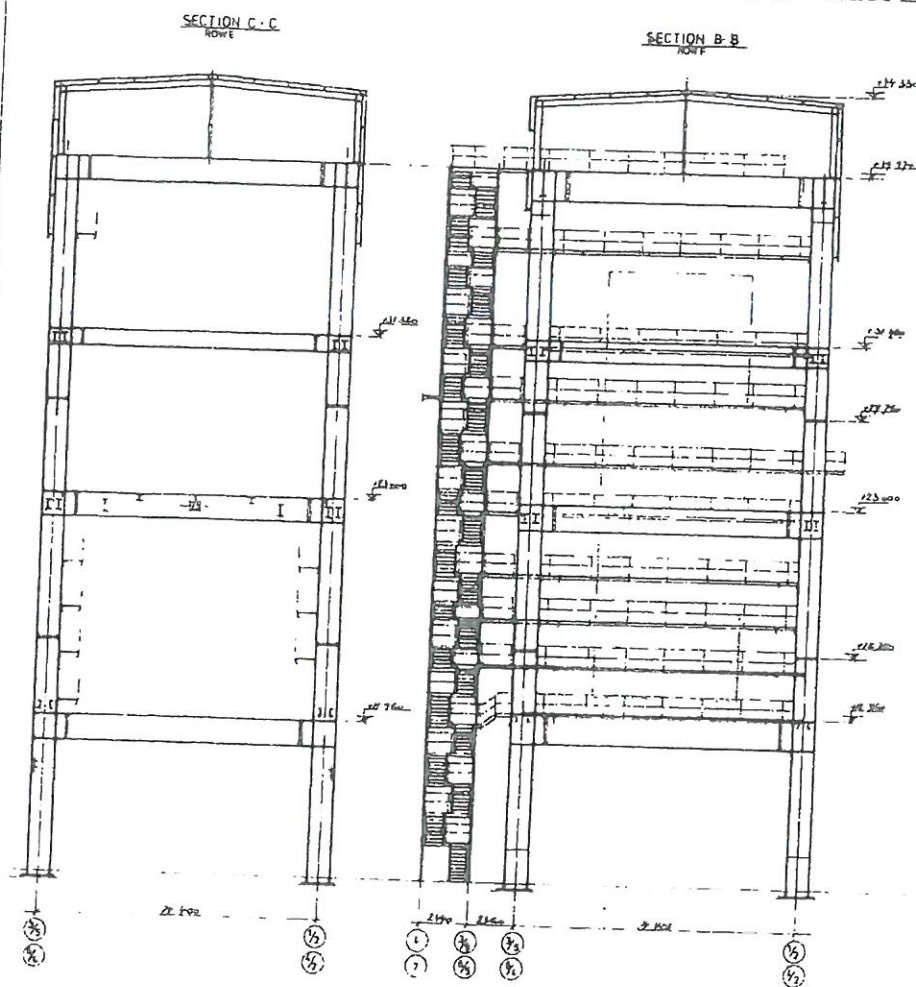
- NOTES
1. ALL DIMENSIONS ARE TO BE PROVIDED ON SITE FROM TO CORRESPONDENCE OF CONSTRUCTION
 2. DIMENSIONS ARE TO BE SCALED
 3. ALL DIMENSIONS ARE IN MILLIMETRES
 4. ALL LEVELS ARE IN METRES RELATIVE TO +0.000 LAT
 5. THIS DRAWING IS TO BE READ IN CONJUNCTION WITH THE FOLLOWING DRAWINGS
 6. TO BE READ IN CONJUNCTION WITH THE FOLLOWING DRAWINGS
 7. CONCRETE UNITS SHALL BE AS FOLLOWS UNLESS OTHERWISE SPECIFIED ON THE DRAWING
 8. CONCRETE UNITS SHALL BE AS FOLLOWS UNLESS OTHERWISE SPECIFIED
 9. VERTICAL SURFACES TO RECEIVE ADDITIONAL FINISHES
 10. VERTICAL SURFACES TO RECEIVE ADDITIONAL FINISHES
 11. VERTICAL SURFACES TO RECEIVE ADDITIONAL FINISHES
 12. VERTICAL SURFACES TO RECEIVE ADDITIONAL FINISHES
 13. VERTICAL SURFACES TO RECEIVE ADDITIONAL FINISHES
 14. VERTICAL SURFACES TO RECEIVE ADDITIONAL FINISHES
 15. VERTICAL SURFACES TO RECEIVE ADDITIONAL FINISHES
 16. VERTICAL SURFACES TO RECEIVE ADDITIONAL FINISHES
 17. VERTICAL SURFACES TO RECEIVE ADDITIONAL FINISHES
 18. VERTICAL SURFACES TO RECEIVE ADDITIONAL FINISHES
 19. VERTICAL SURFACES TO RECEIVE ADDITIONAL FINISHES
 20. VERTICAL SURFACES TO RECEIVE ADDITIONAL FINISHES



EXPANSION JOINTS IN ROOF FINISHES ADDED		22.11.91
ASL AT +55.140 & +15.140 DELETED. 4 No. OPENINGS PROVIDED FOR ASL AT +85.140		6.7.90
LAYOUT OF PAINT BANDS AND NOTE ON PAINTING ADDED		8.6.90
TOP OF LINERS, FINISHED FLOOR LEVELS & BASE SLAB SHOWN. ALL LEVELS, SECTION C-DIMENSIONS, LINER LIFTING HOLES & ROOF RECESS REVERSED. DUCT ENTRY SLOTTED CAST IN PLATES ADDED		14.4.90
CHIMNEY BATTER INDICATED POCKETS AT AT +23.000 MODIFIED PCO OF LINER LIFTING HOLES AND ROOF CONCRETE GRADE AND WINDSHIELD PAINTING NOTES ADDED		18.3.90
ISSUED FOR CONSTRUCTION ORIGINAL ISSUE		2.3.90

GENERAL ARRANGEMENT OF WINDSHIELD

REVISIONS		DATE	BY	REASON
1	2	26.5.90		
2	3	1.7.90		
3	4	1.7.90		
4	5	1.7.90		
5	6	1.7.90		
6	7	1.7.90		
7	8	1.7.90		
8	9	1.7.90		
9	10	1.7.90		
10	11	1.7.90		
11	12	1.7.90		
12	13	1.7.90		
13	14	1.7.90		
14	15	1.7.90		
15	16	1.7.90		
16	17	1.7.90		
17	18	1.7.90		
18	19	1.7.90		
19	20	1.7.90		
20	21	1.7.90		
21	22	1.7.90		
22	23	1.7.90		
23	24	1.7.90		
24	25	1.7.90		
25	26	1.7.90		
26	27	1.7.90		
27	28	1.7.90		
28	29	1.7.90		
29	30	1.7.90		
30	31	1.7.90		
31	32	1.7.90		
32	33	1.7.90		
33	34	1.7.90		
34	35	1.7.90		
35	36	1.7.90		
36	37	1.7.90		
37	38	1.7.90		
38	39	1.7.90		
39	40	1.7.90		
40	41	1.7.90		
41	42	1.7.90		
42	43	1.7.90		
43	44	1.7.90		
44	45	1.7.90		
45	46	1.7.90		
46	47	1.7.90		
47	48	1.7.90		
48	49	1.7.90		
49	50	1.7.90		
50	51	1.7.90		
51	52	1.7.90		
52	53	1.7.90		
53	54	1.7.90		
54	55	1.7.90		
55	56	1.7.90		
56	57	1.7.90		
57	58	1.7.90		
58	59	1.7.90		
59	60	1.7.90		
60	61	1.7.90		
61	62	1.7.90		
62	63	1.7.90		
63	64	1.7.90		
64	65	1.7.90		
65	66	1.7.90		
66	67	1.7.90		
67	68	1.7.90		
68	69	1.7.90		
69	70	1.7.90		
70	71	1.7.90		
71	72	1.7.90		
72	73	1.7.90		
73	74	1.7.90		
74	75	1.7.90		
75	76	1.7.90		
76	77	1.7.90		
77	78	1.7.90		
78	79	1.7.90		
79	80	1.7.90		
80	81	1.7.90		
81	82	1.7.90		
82	83	1.7.90		
83	84	1.7.90		
84	85	1.7.90		
85	86	1.7.90		
86	87	1.7.90		
87	88	1.7.90		
88	89	1.7.90		
89	90	1.7.90		
90	91	1.7.90		
91	92	1.7.90		
92	93	1.7.90		
93	94	1.7.90		
94	95	1.7.90		
95	96	1.7.90		
96	97	1.7.90		
97	98	1.7.90		
98	99	1.7.90		
99	100	1.7.90		



ENEMALTA CORPORATION	
JOB	DELIMARA PHASE 1 UNITS 1 & 2
SYSTEM	DELIMARA
SUB-SYSTEM	
DWG IDENT	DMC/DA17001.0
<p>GENERAL PLAN</p> <p>2nd PART</p> <p>11-392-10-004</p>	

